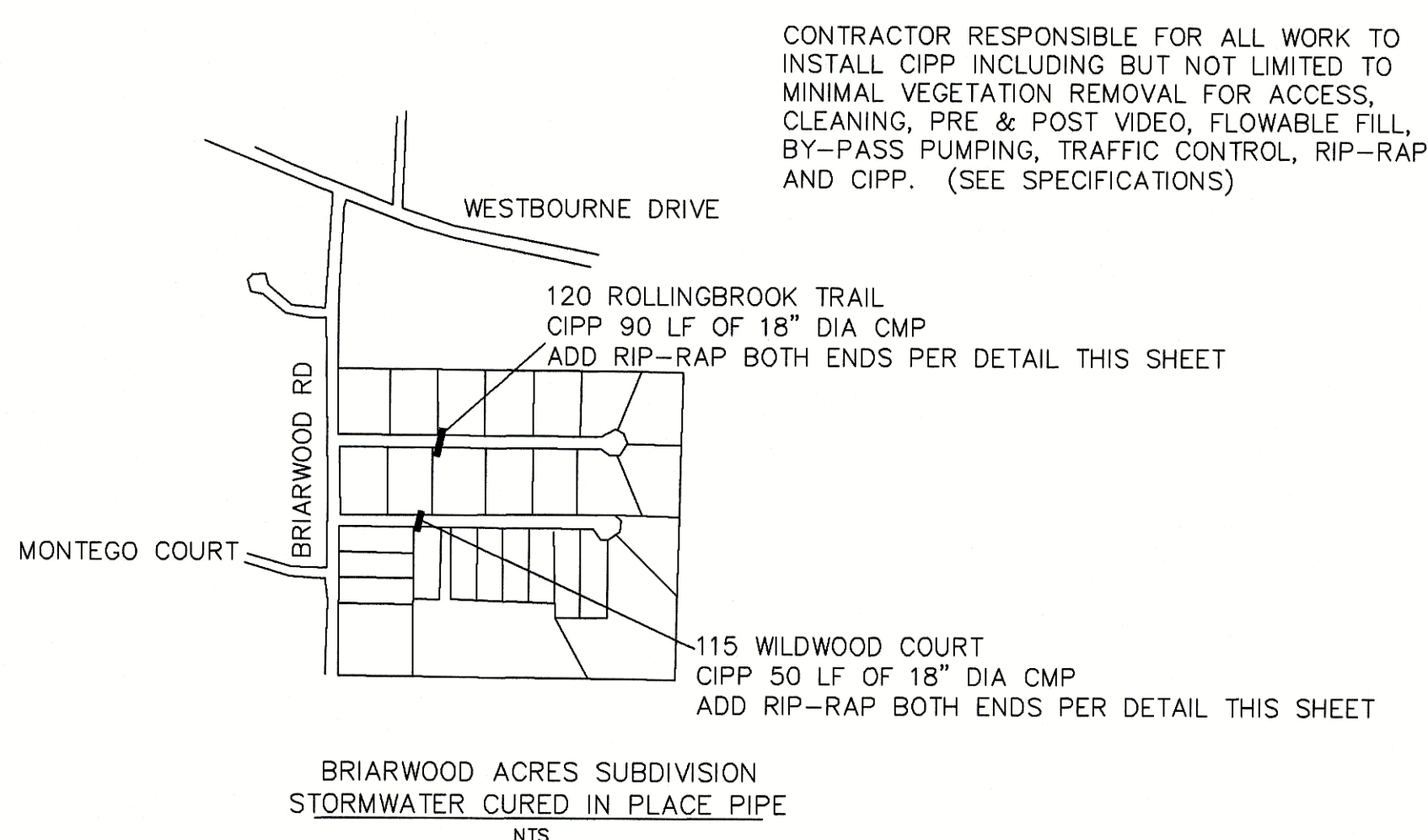


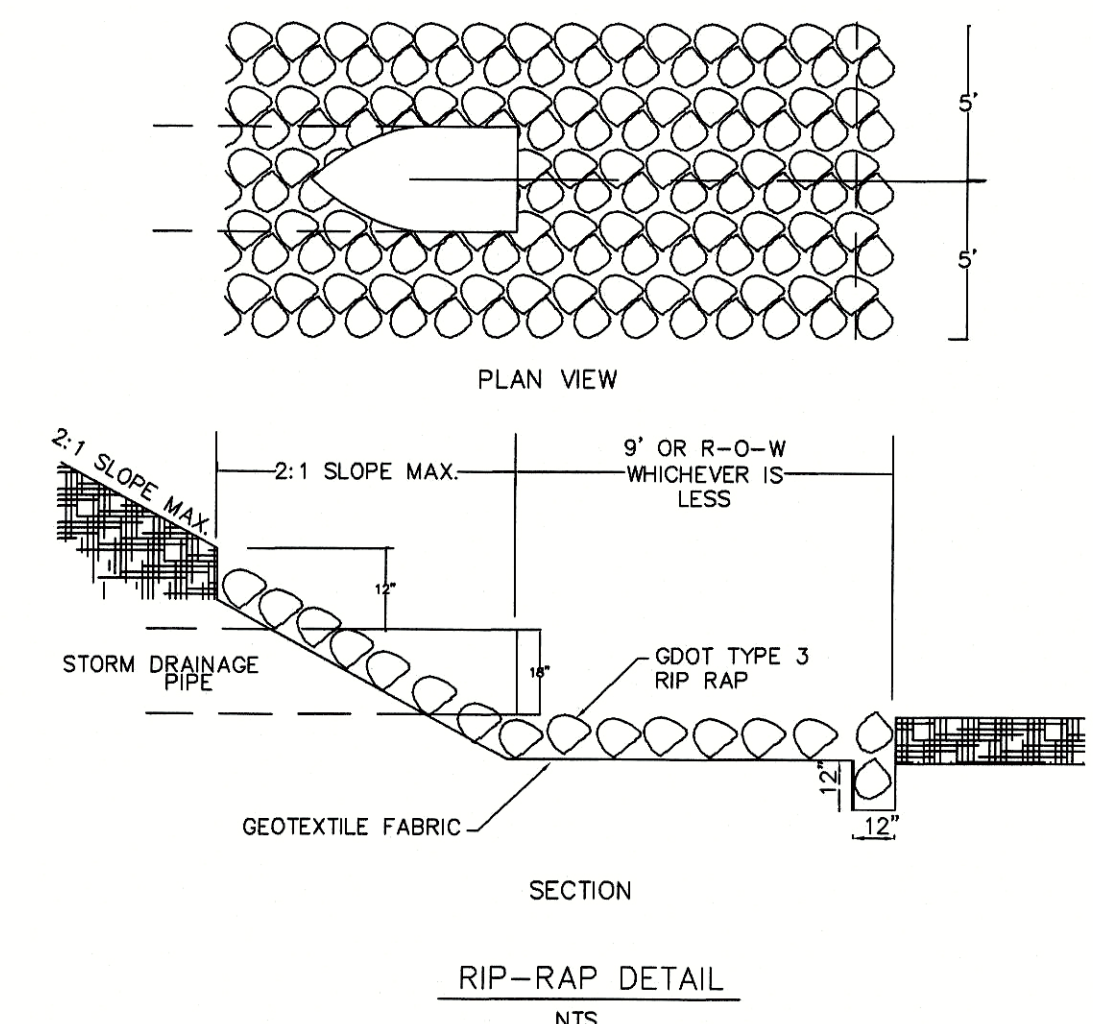
BEFORE DIGGING IN
GEORGIA
CALL 811

PROJECT GENERAL NOTES:

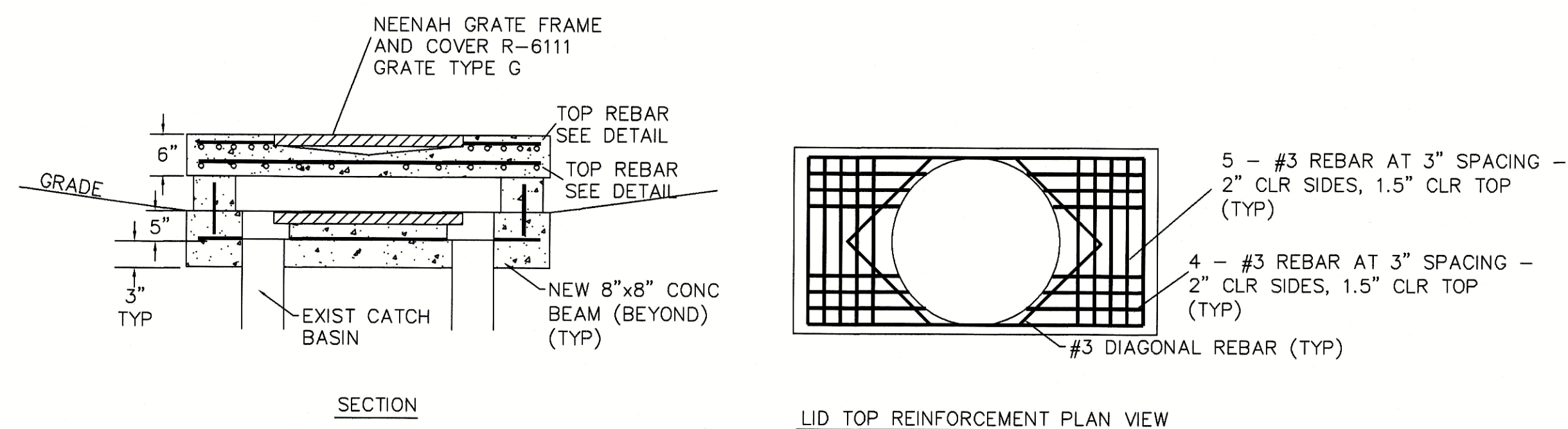
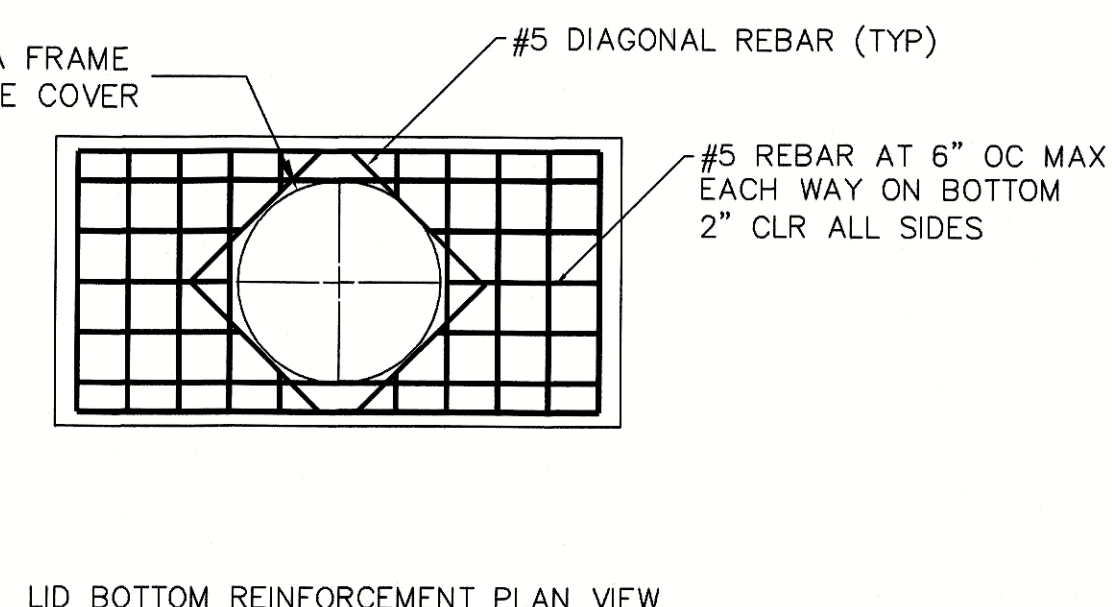
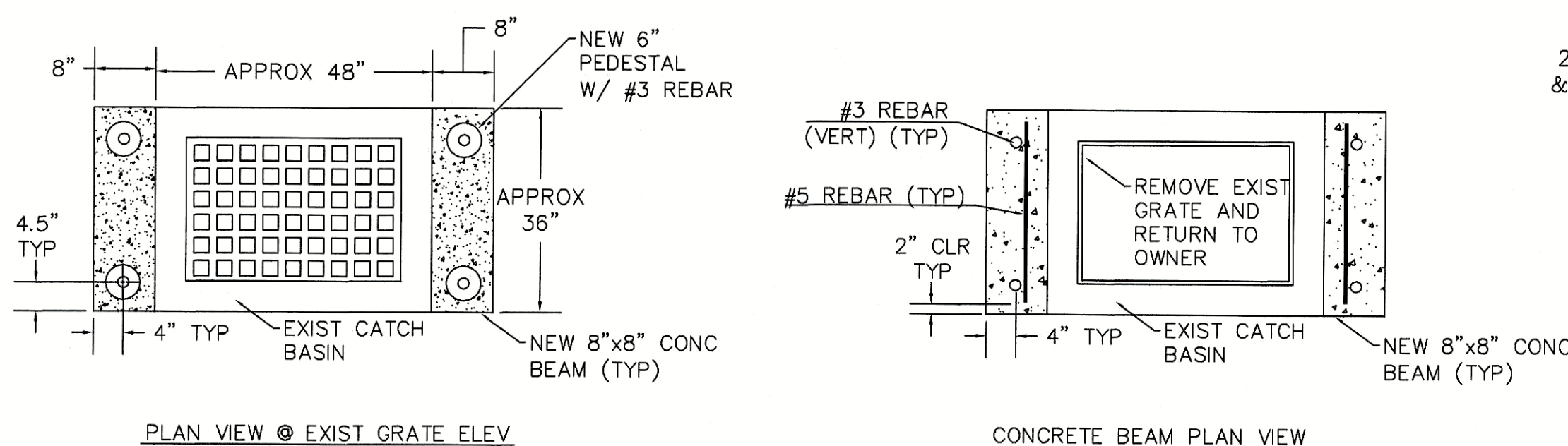
- 1) LOCATIONS WILL BE MARKED IN THE FIELD AT PRE-CON WITH CONTRACTOR AND THE TOWN OF TYRONE (OWNER).
- 2) CONTRACTOR IS RESPONSIBLE FOR UTILITY LOCATES AND MARKING BEFORE CONSTRUCTION. ANY DAMAGE TO UTILITIES WILL BE REPAIRED TO THE UTILITY COMPANY'S ACCEPTANCE AND PAID BY THE CONTRACTOR. ALL REPAIRS WILL BE AT NO COST TO THE OWNER.
- 3) INSPECTION ARE REQUIRED PRIOR TO CONCRETE POUR. CONTRACTOR WILL CONTACT OWNER 48 HOURS PRIOR TO POUR FOR INSPECTION. OWNER WILL PAY FOR ONE INSPECTION FOR EACH POUR AND ANY RE-INSPECTIONS OR DELAYS WILL BE AT THE COST OF THE CONTRACTOR.
- 4) CONTRACTOR IS RESPONSIBLE FOR ALL TRAFFIC CONTROL. TRAFFIC CONTROL SHALL MEET MUTCD AND GDOT REQUIREMENTS.
- 5) CONTRACTOR SHALL PROVIDE WARNING SIGNS AND BARRIERS AROUND OPEN EXCAVATIONS AND WORK AREAS.
- 6) PLANS ARE A GENERAL REPRESENTATION OF LOCATION AND DIMENSIONS. CONTRACTOR IS REQUIRED TO PERFORM A SITE VISIT PRIOR TO BID TO FIELD VERIFY ALL ONSITE CONDITIONS AND MEASUREMENTS. NO ADJUSTMENTS WILL BE MADE IN COST FOR ANY ITEM THAT COULD/SHOULD HAVE BEEN IDENTIFIED DURING A SITE VISIT.
- 7) WORK HOURS SHALL BE 8AM TO 6PM. WORK BEYOND THESE HOURS MUST BE APPROVED IN WRITING BY THE OWNER PRIOR TO THE WORK BEING PERFORMED.
- 8) CONTRACTOR SHALL BE RESPONSIBLE FOR ALL WORK SAFETY AND COMPLIANCE WITH OSHA & GDOT REGULATIONS. THE CONTRACTOR SHALL NOT PLAY MUSIC OR ALLOW SMOKING ON THE JOB SITE.
- 9) CONTRACTOR SHALL BE RESPONSIBLE FOR SITE SECURITY. LOCATION FOR OVERNIGHT PARKING OF EQUIPMENT AND VEHICLES MUST BE APPROVED BY THE OWNER.
- 10) COLLECTION OF TRASH/DEBRIS SHALL BE AT THE END OF EACH WORK DAY. ALL TRASH/DEBRIS SHALL BE DISPOSED OF LEGALLY OFFSITE.
- 11) CONTRACTOR SHALL INSTALL AND REMOVE EROSION CONTROL MEASURES AS NEEDED AT EACH LOCATION. THIS INCLUDES PROVIDING A CONCRETE WASHOUT AREA OR DUMPSTER.
- 12) CONTRACTOR SHALL REPLACE ALL GRASS AREAS DISTURBED WITH SOD THAT MATCHES THE SPECIES OF THE EXISTING SOD. ANY OTHER LANDSCAPING SHALL BE REPLACED TO MATCH THE PRE-CONSTRUCTION CONDITIONS. (THIS INCLUDES, BUT IS NOT LIMITED TO, MULCH, PINE STRAW, TREES, BUSHES, AND IRRIGATION SYSTEM PARTS).
- 13) CONTRACTOR IS RESPONSIBLE FOR REMOVAL AND DISPOSAL OF EXISTING CONCRETE AND PROTECTING EXISTING CONCRETE TO REMAIN. ALL CUTS SHALL BE SAW CUT. ALL CUTS SHALL BE CONSIDERED AN EXPANSION JOINT AND SHALL HAVE BITUMINOUS FIBER EXPANSION JOINT FILLER.
- 14) ALL SOIL REMOVED FROM PIPES SHALL DISPOSED OF LEGALLY OFFSITE.
- 15) ALL WORK SHALL COMPLY WITH THE GEORGIA DEPARTMENT OF TRANSPORTATION STANDARD SPECIFICATIONS FOR CONSTRUCTION OF ROADS AND BRIDGES, LATEST EDITION.
- 16) ALL CONCRETE HAVE COMPRESSIVE STRENGTH OF 4,000 PSI AT 28 DAYS.
- 17) ALL REINFORCING STEEL SHALL HAVE MINIMUM YIELDS STRENGTH OF 60,000 PSI.



CONTRACTOR RESPONSIBLE FOR ALL WORK TO INSTALL CIPP INCLUDING BUT NOT LIMITED TO MINIMAL VEGETATION REMOVAL FOR ACCESS, CLEANING, PRE & POST VIDEO, FLOWABLE FILL, BY-PASS PUMPING, TRAFFIC CONTROL, RIP-RAP AND CIPP. (SEE SPECIFICATIONS)



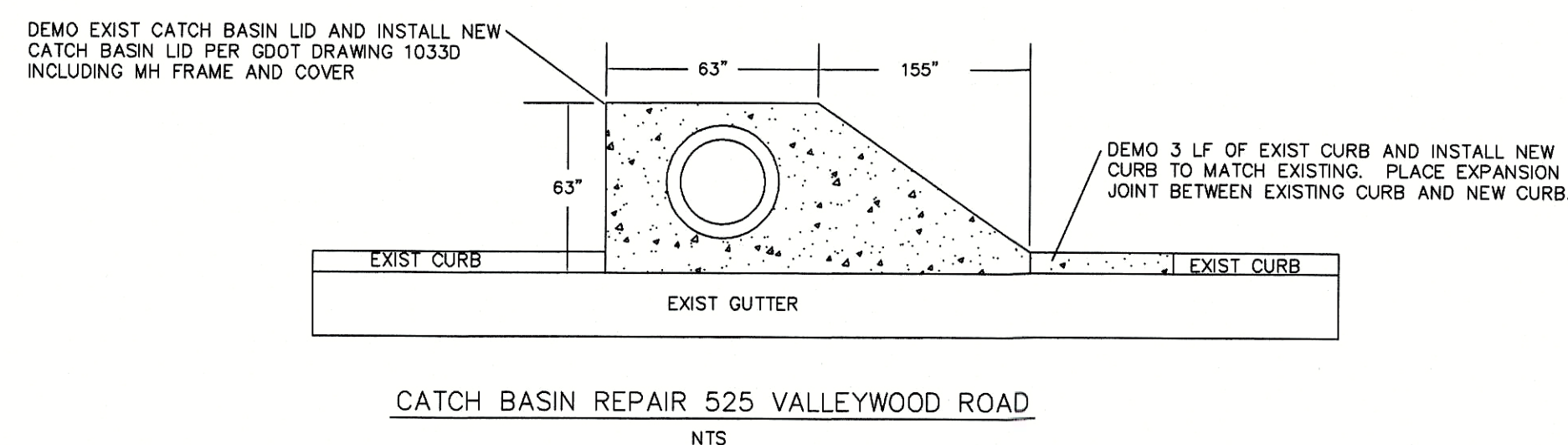
CONTRACTOR TO FIELD VERIFY ALL DIMENSIONS



CATCH BASIN REPAIR 3020 CASTLE LAKE ROAD
NTS

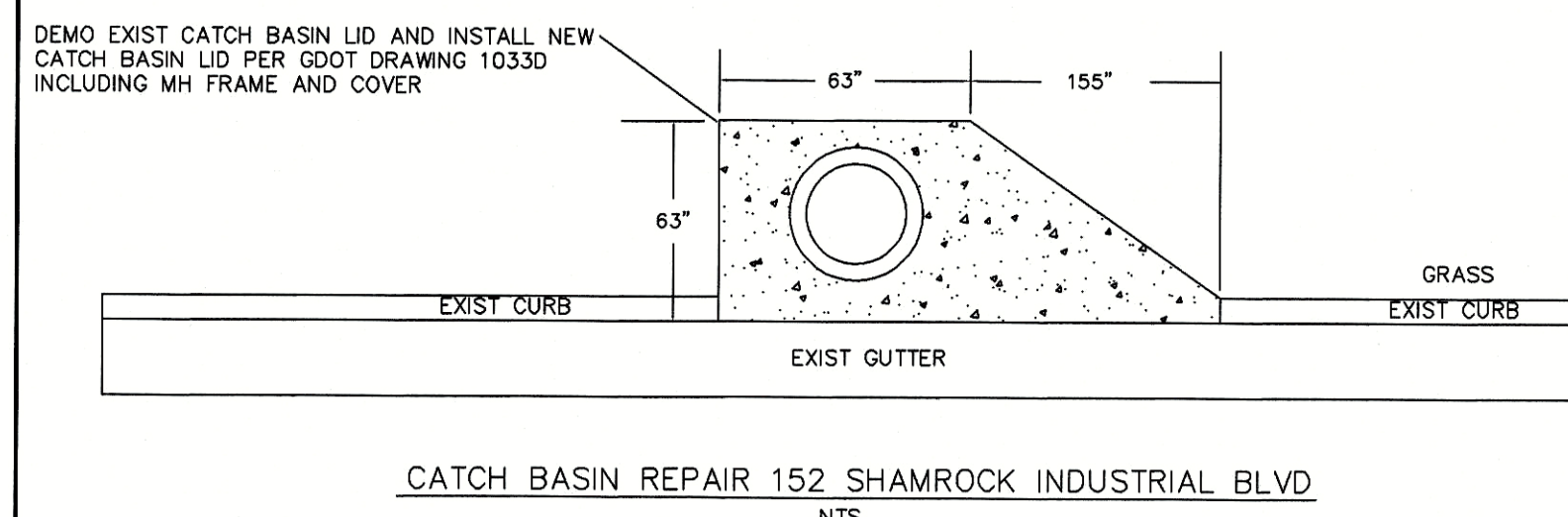
- NOTES:
- 1) STL REBAR MINIMUM YIELD = 60,000 PSI
 - 2) CONCRETE COMPRESSIVE STRENGTH = 4,000 PSI @ 28 DAYS W/ FIBER (1.5 LB/CYD)
 - 3) FRAME AND COVER NEENAH R-6111 GRATE TYPE G OR APPROVED EQUAL
 - 4) REMOVE EXISTING GRATE ONLY AND RETURN TO OWNER

CONTRACTOR TO FIELD VERIFY ALL DIMENSIONS

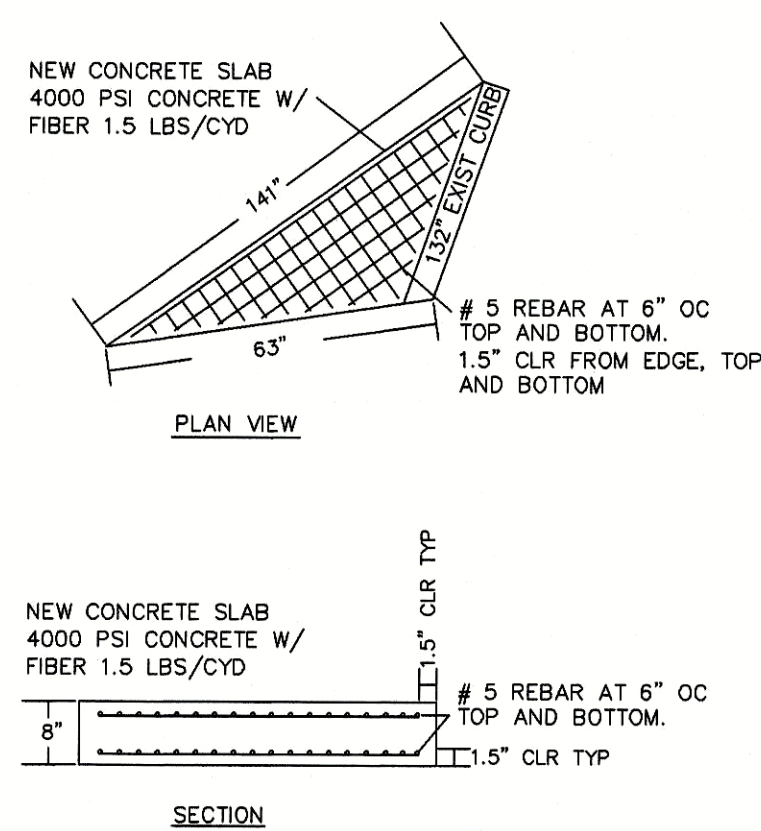


CATCH BASIN REPAIR 525 VALLEYWOOD ROAD
NTS

CONTRACTOR TO FIELD VERIFY ALL DIMENSIONS

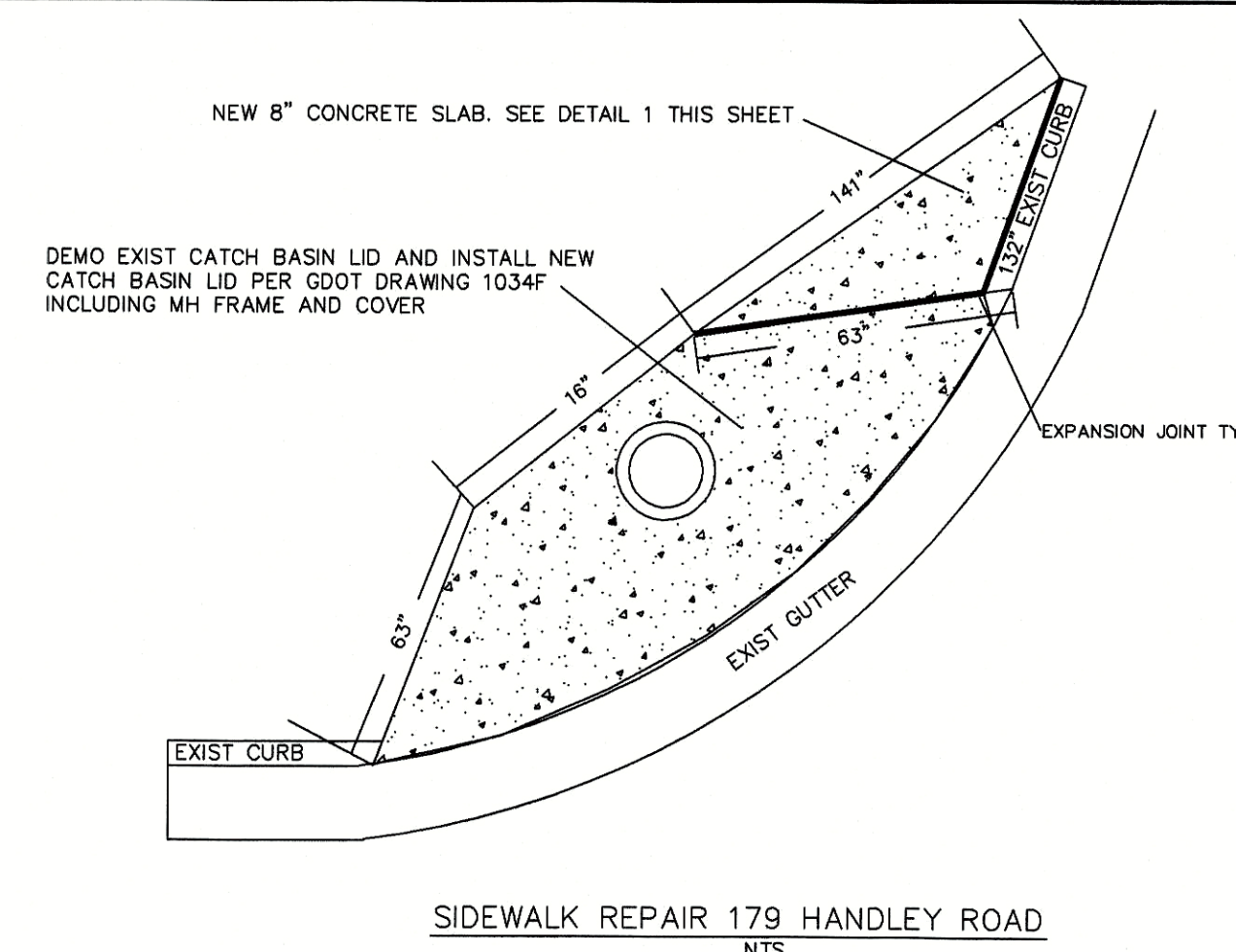


CATCH BASIN REPAIR 152 SHAMROCK INDUSTRIAL BLVD
NTS



DETAIL 1
NTS

CONTRACTOR TO FIELD VERIFY ALL DIMENSIONS



SIDEWALK REPAIR 179 HANDLEY ROAD
NTS

TOWN OF TYRONE
950 SENOIA ROAD
TYRONE, GA 30290
770-487-4038



Project Name: 2021 MISCELLANEOUS DRAINAGE IMPROVEMENTS

Project No.: PW-2021-02

Location: TOWN OF TYRONE

TOWN OF TYRONE
VARIOUS LOCATIONS

PLAN VIEW AND DETAILS

Sheet Title

Scale: AS NOTED

Designed by: SAL

Drawn by: SAL

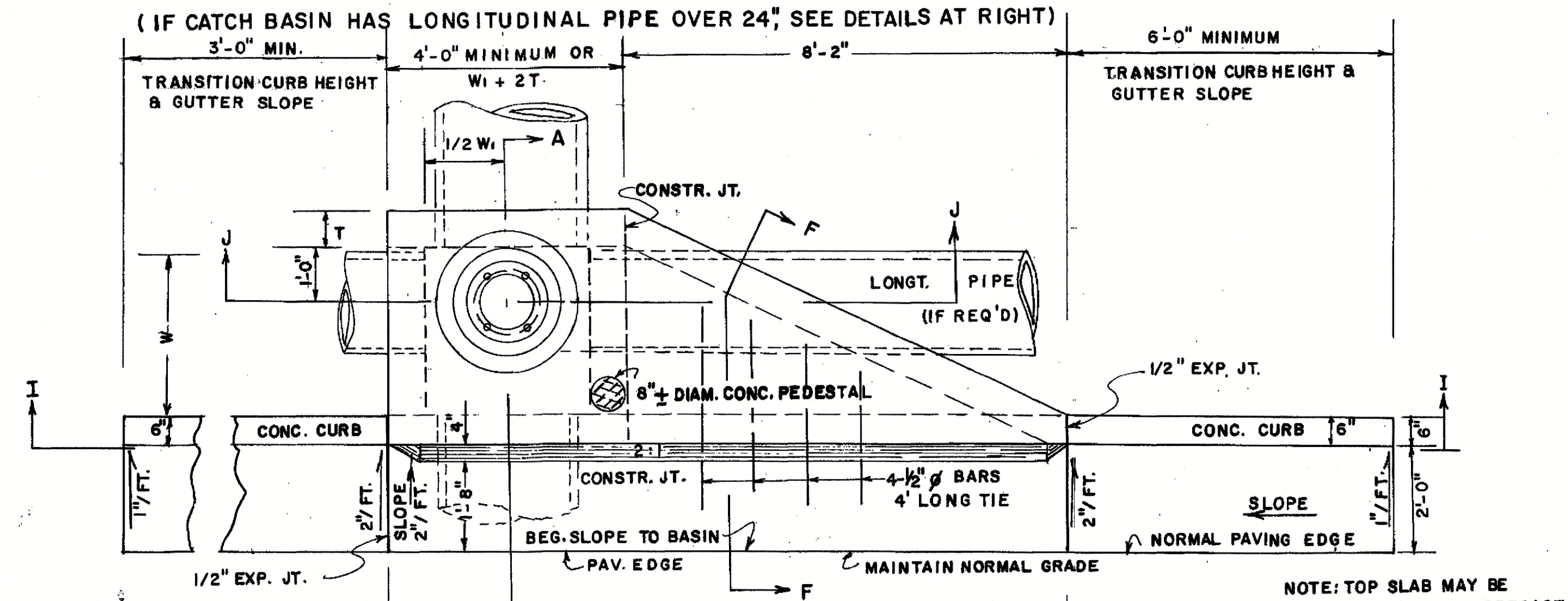
Sheet No.: C100

Date: JAN 25, 2021

Filename: 2021 MISC DRAINAGE IMPROVEMENTS

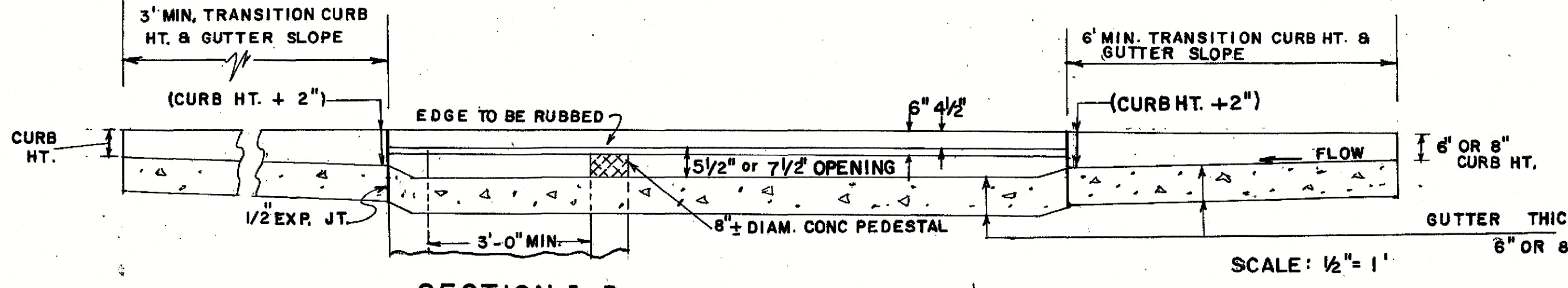
| STATE | PROJECT NUMBER | SHEET NO. | TOTAL SHEETS |
|-------|----------------|-----------|--------------|
| GA. | | | |

CATCH BASIN



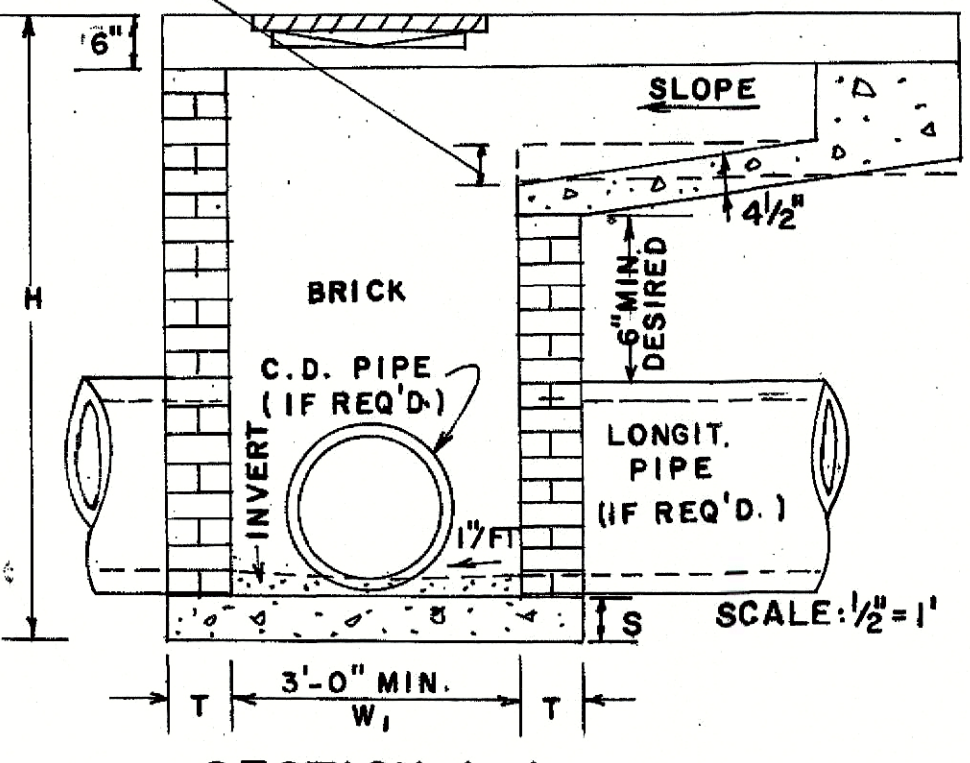
NOTE: TOP SLAB MAY BE CAST IN PLACE OR PRECAST. IF SLAB IS CAST IN PLACE, BUILDERS PAPER IS TO BE PLACED BETWEEN THE CATCH BASIN AND TOP SLAB.

PLAN

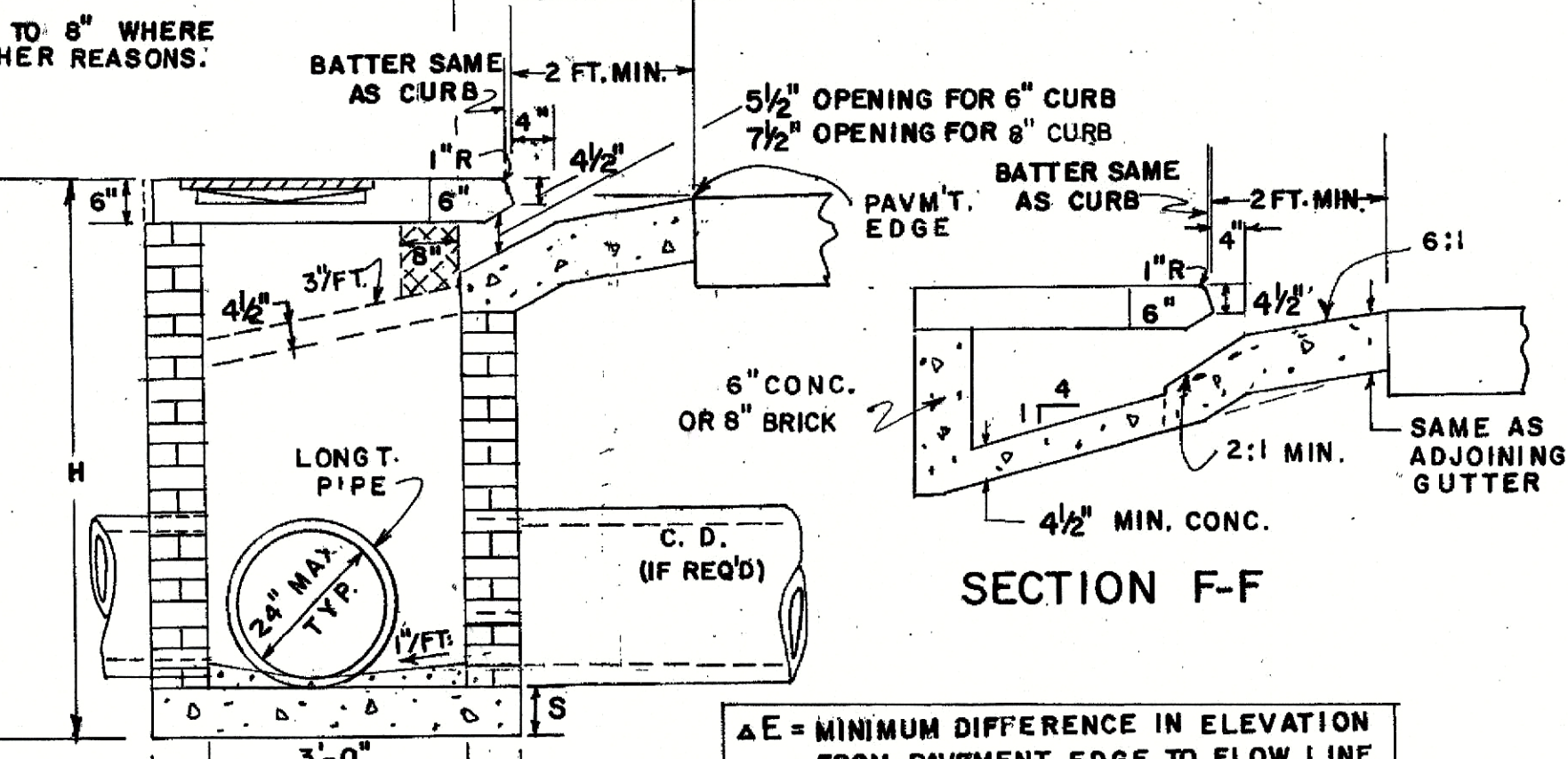


SECTION I-I

NOTE: NORMAL SLOPE OF CONCRETE APRON TO BE INCREASED BY 4" TO 8" WHERE "H" PERMITS AND LONGITUDINAL PIPE IS LOWERED FOR OTHER REASONS.



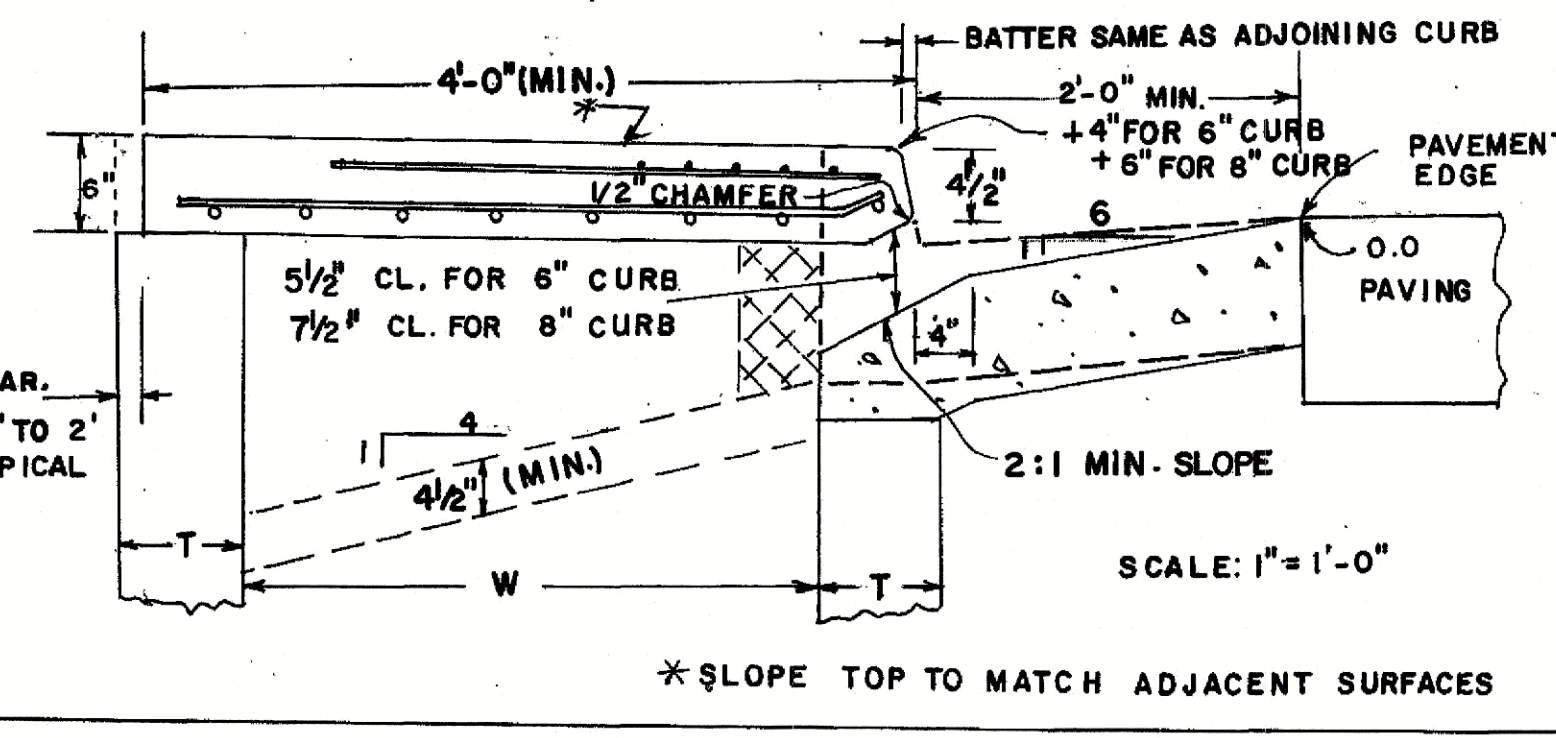
SECTION J-J



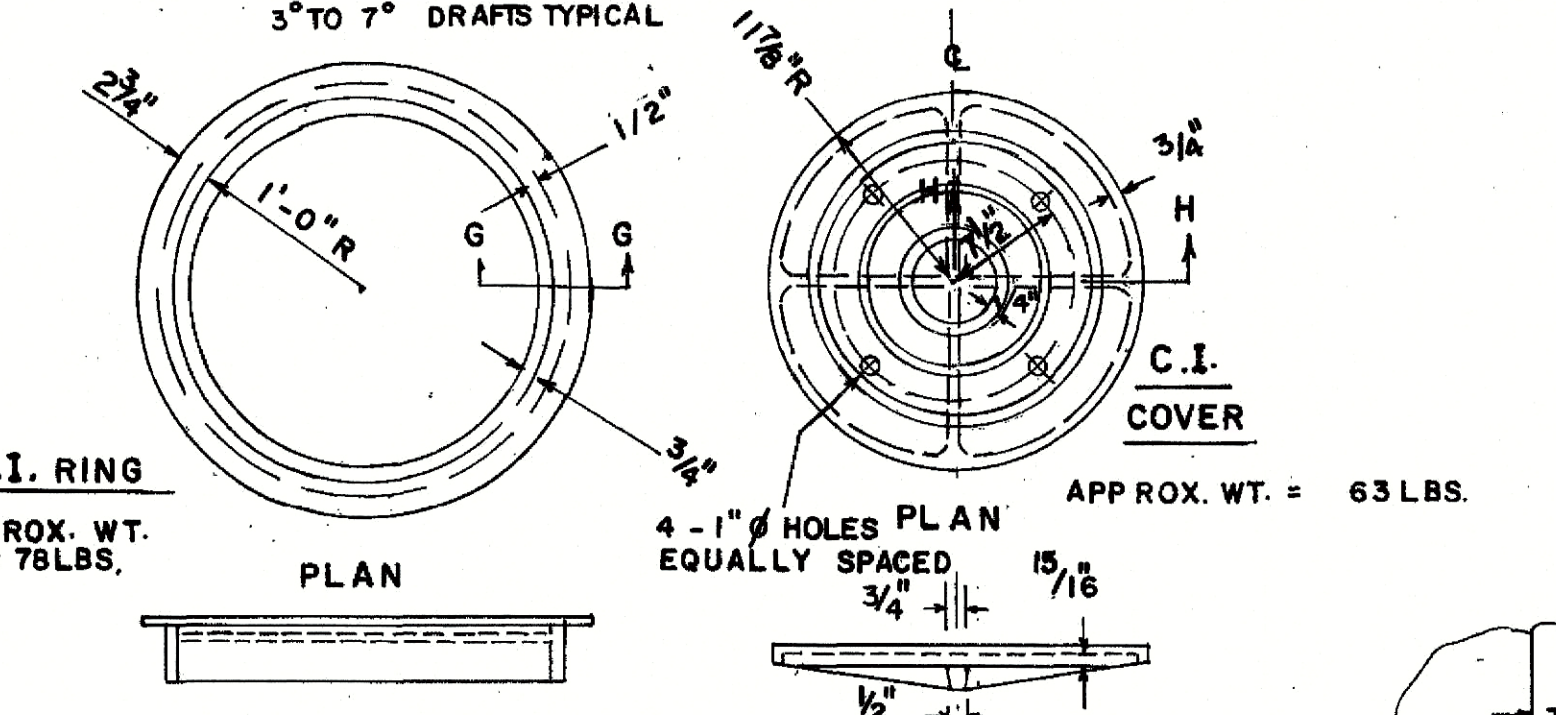
SECTION A-A

ΔE = MINIMUM DIFFERENCE IN ELEVATION FROM PAVEMENT EDGE TO FLOW LINE OF OUTLET PIPE.

DETAIL OF TOP SLAB, REINF STEEL & CLEARANCES REQ'D.



CASTING DETAILS



PLAN

ELEVATION

SECTION G-G

SCALE: 3" = 1"

SECTION H-H

SCALE: 3" = 1"

SECTION A-A

SCALE: 3" = 1"

SCALE: 1" = 1'-0"

SCALE: 1" = 1'-0"

SCALE: 1" = 1'-0"

SCALE: 1" = 1'-0"

SCALE: 1" = 1'-0"

SCALE: 1" = 1'-0"

SCALE: 1" = 1'-0"

SCALE: 1" = 1'-0"

SCALE: 1" = 1'-0"

SCALE: 1" = 1'-0"

SCALE: 1" = 1'-0"

SCALE: 1" = 1'-0"

SCALE: 1" = 1'-0"

SCALE: 1" = 1'-0"

SCALE: 1" = 1'-0"

SCALE: 1" = 1'-0"

SCALE: 1" = 1'-0"

SCALE: 1" = 1'-0"

SCALE: 1" = 1'-0"

SCALE: 1" = 1'-0"

SCALE: 1" = 1'-0"

SCALE: 1" = 1'-0"

SCALE: 1" = 1'-0"

SCALE: 1" = 1'-0"

SCALE: 1" = 1'-0"

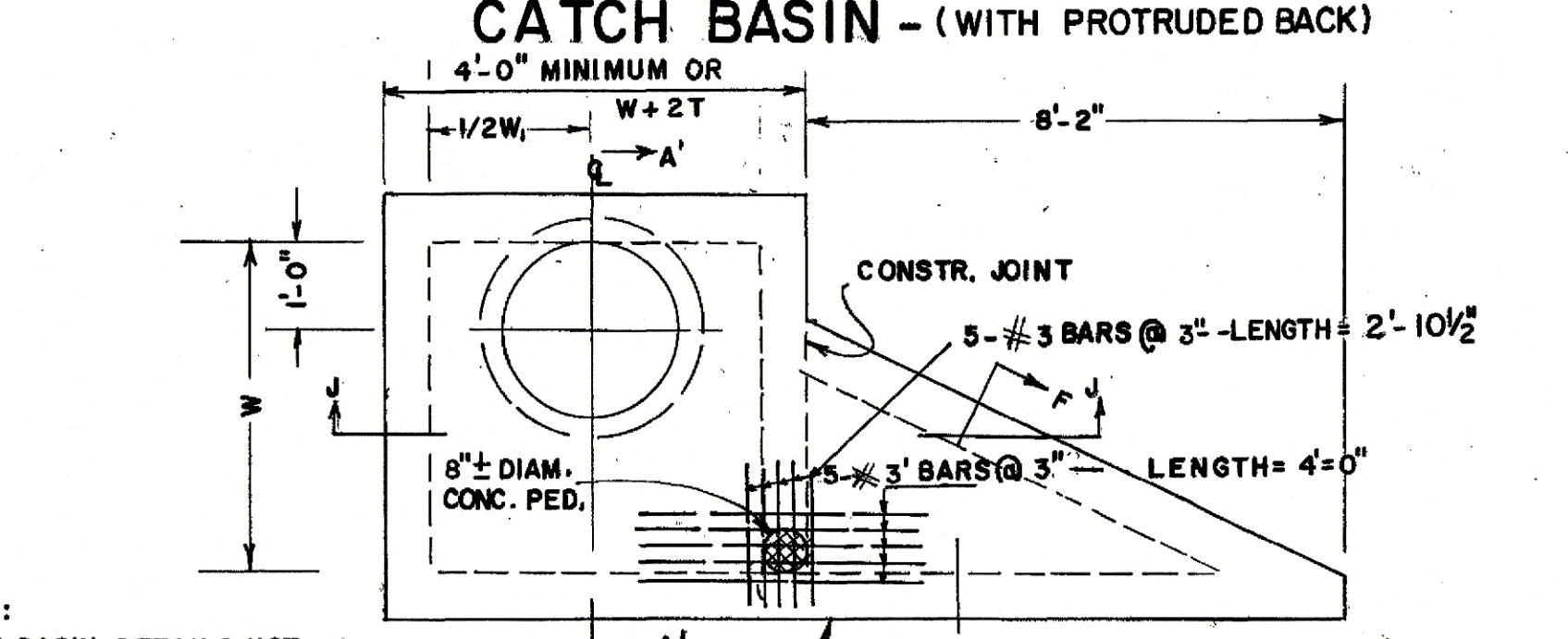
SCALE: 1" = 1'-0"

SCALE: 1" = 1'-0"

SCALE: 1" = 1'-0"

SCALE: 1" = 1'-0"

(TYPICAL FOR CATCH BASIN WITH LARGE LONGITUDINAL PIPE OR RECESSED BOX)



PART PLAN

NOTE: CATCH BASIN DETAILS NOT SHOWN HERE WILL BE SIMILAR TO THOSE AT LEFT FOR NORMAL CATCH BASIN.

NO SCALE

NOTE: RECESSED BOX TO BE USED ONLY WHERE SPECIFIED. SHALLOW LONG. PIPE OR UNDERGROUND OBSTRUCTION TYPICAL

LOCATION OF BOX FRONT VARIED INDIVIDUALLY

NOTE: H₂ & W₂ TO BE SHOWN IN THE PLANS

SECTION A-A' (WITH LARGE LONGITUDINAL PIPE)

SECTION A-A' (WITH RECESSED BOX)

SECTION A-A' (WITH RECESSED BOX)

SECTION A-A' (WITH RECESSED BOX)

SECTION A-A' (WITH RECESSED BOX)

SECTION A-A' (WITH RECESSED BOX)

SECTION A-A' (WITH RECESSED BOX)

SECTION A-A' (WITH RECESSED BOX)

SECTION A-A' (WITH RECESSED BOX)

SECTION A-A' (WITH RECESSED BOX)

SECTION A-A' (WITH RECESSED BOX)

SECTION A-A' (WITH RECESSED BOX)

SECTION A-A' (WITH RECESSED BOX)

SECTION A-A' (WITH RECESSED BOX)

SECTION A-A' (WITH RECESSED BOX)

SECTION A-A' (WITH RECESSED BOX)

SECTION A-A' (WITH RECESSED BOX)

SECTION A-A' (WITH RECESSED BOX)

SECTION A-A' (WITH RECESSED BOX)

SECTION A-A' (WITH RECESSED BOX)

SECTION A-A' (WITH RECESSED BOX)

SECTION A-A' (WITH RECESSED BOX)

SECTION A-A' (WITH RECESSED BOX)

SECTION A-A' (WITH RECESSED BOX)

SECTION A-A' (WITH RECESSED BOX)

SECTION A-A' (WITH RECESSED BOX)

SECTION A-A' (WITH RECESSED BOX)

SECTION A-A' (WITH RECESSED BOX)

SECTION A-A' (WITH RECESSED BOX)

SECTION A-A' (WITH RECESSED BOX)

SECTION A-A' (WITH RECESSED BOX)

SECTION A-A' (WITH RECESSED BOX)

SECTION A-A' (WITH RECESSED BOX)

SECTION A-A' (WITH RECESSED BOX)

SECTION A-A' (WITH RECESSED BOX)

SECTION A-A' (WITH RECESSED BOX)

SECTION A-A' (WITH RECESSED BOX)

SECTION A-A' (WITH RECESSED BOX)

SECTION A-A' (WITH RECESSED BOX)

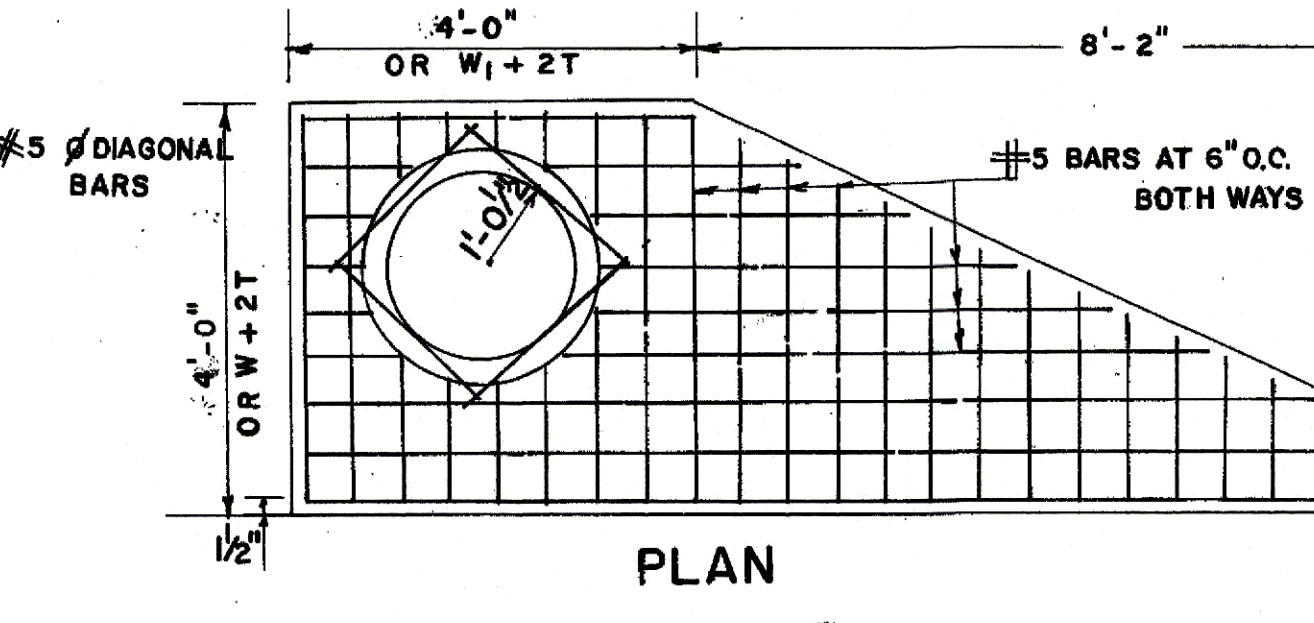
SECTION A-A' (WITH RECESSED BOX)

SECTION A-A' (WITH RECESSED BOX)

SECTION A-A' (WITH RECESSED BOX)

SECTION A-A' (WITH RECESSED BOX)

DETAIL OF TOP REINFORCED CONCRETE SLAB



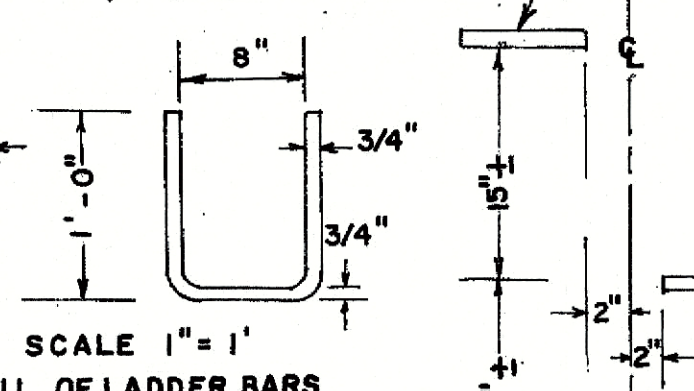
PLAN

ELEVATION

NOTE: ALL BARS IN PLAN VIEW ARE SPACED AT 6" O.C.

NOTE: FOR PLAN DETAIL OF REINFORCING STEEL IN TOP PORTION OF SLAB, SEE PART PLAN AT TOP RIGHT.

DETAIL OF LADDER BARS



SCALE 1" = 1'

NOTE: M.H. STEPS LISTED IN GA. D.O.T. LABORATORY'S QUALIFIED PRODUCTS LIST MAY BE SUBSTITUTED.

ARRANGEMENT OF LADDER BARS

| WOR W ₁ (MAX.) | BOTTOM SLAB MATERIALS | S |
|---------------------------|---|----|
| TO 4'-6" | NON-REINF. CONCRETE | 6" |
| | OR BRICK | 8" |
| OVER 4'-6" | CONC. REINF. W/ #4 BARS 12" O.C. BOTH WAYS 2" CL. FROM SLAB TOP | 8" |

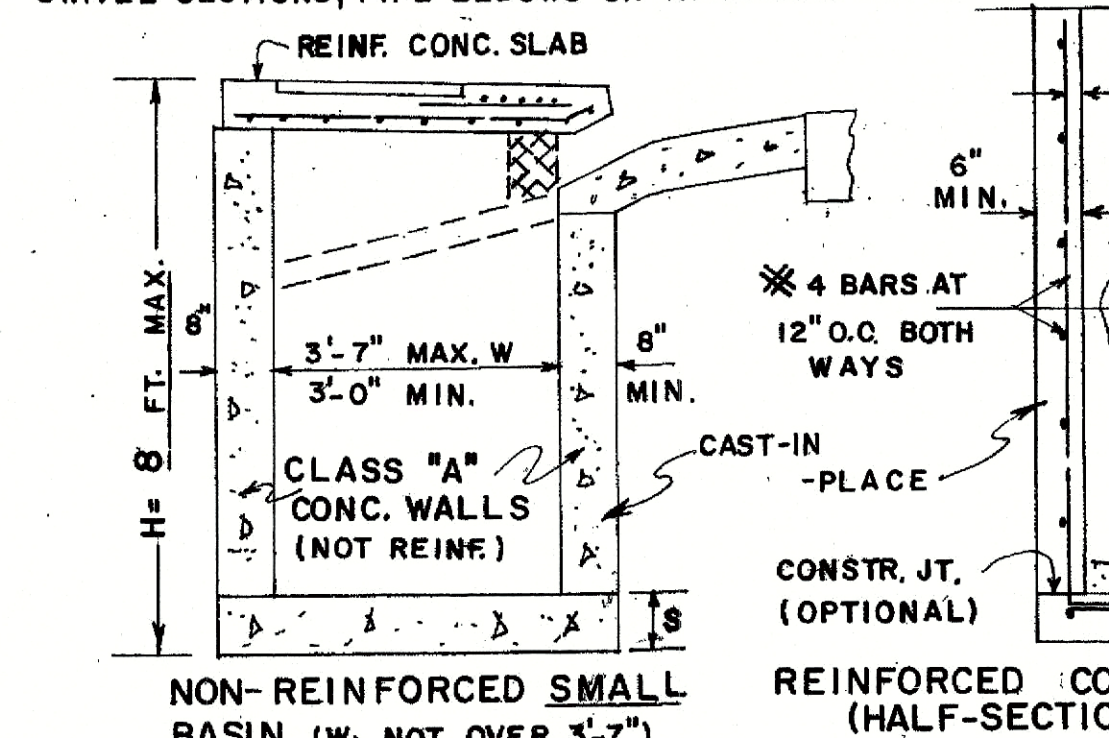
TYPICAL MIN. DIMENSIONS

| PIPE DIA. | H (MIN.) | W or W ₁ | ΔE (MIN.) |
|-----------|----------|---------------------|-----------|
| 12 | 4'-4" | 3'-0" | 3'-3" |
| 15 | 4'-7" | 3'-0" | 3'-6" |
| 18 | 4'-10" | 3'-0" | 3'-9" |
| 24 | 5'-6" | 3'-0" | 4'-4" |
| 30 | 6'-2" | 3'-7" | 5'-0" |
| 36 | 6'-10" | 4'-6" | 5'-7" |
| 42 | 7'-4" | 5'-3" | 5'-11" |
| 48 | 8'-0" | 6'-0" | 6'-6" |
| 54 | 8'-6" | 6'-8" | 7'-0" |
| 60 | 9'-2" | 7'-4" | 7'-7" |

NOTE: THE MIN. R & MIN. ΔE GIVEN IN ABOVE TABLE ARE BASED UPON TYPICAL OUTSIDE DIAMETERS OF CONC. PIPE AND MAY BE VARIED IF CONDITIONS PERMIT WITH VARIOUS DIMENSIONS SPECIFIED IN THE PLANS OR DIRECTED BY THE ENGINEER. W & W₁ DIMENSIONS DO NOT HAVE TO BE EQUAL.

PRECAST BOX ON BRICK (HALF-SECTION)

NOTE: TYPICAL TREATMENT FOR SKEWED PIPE ARE: CIRCULAR PRECAST SWIVEL SECTIONS; PIPE ELBOWS OR INCREASED BOX SIZE.



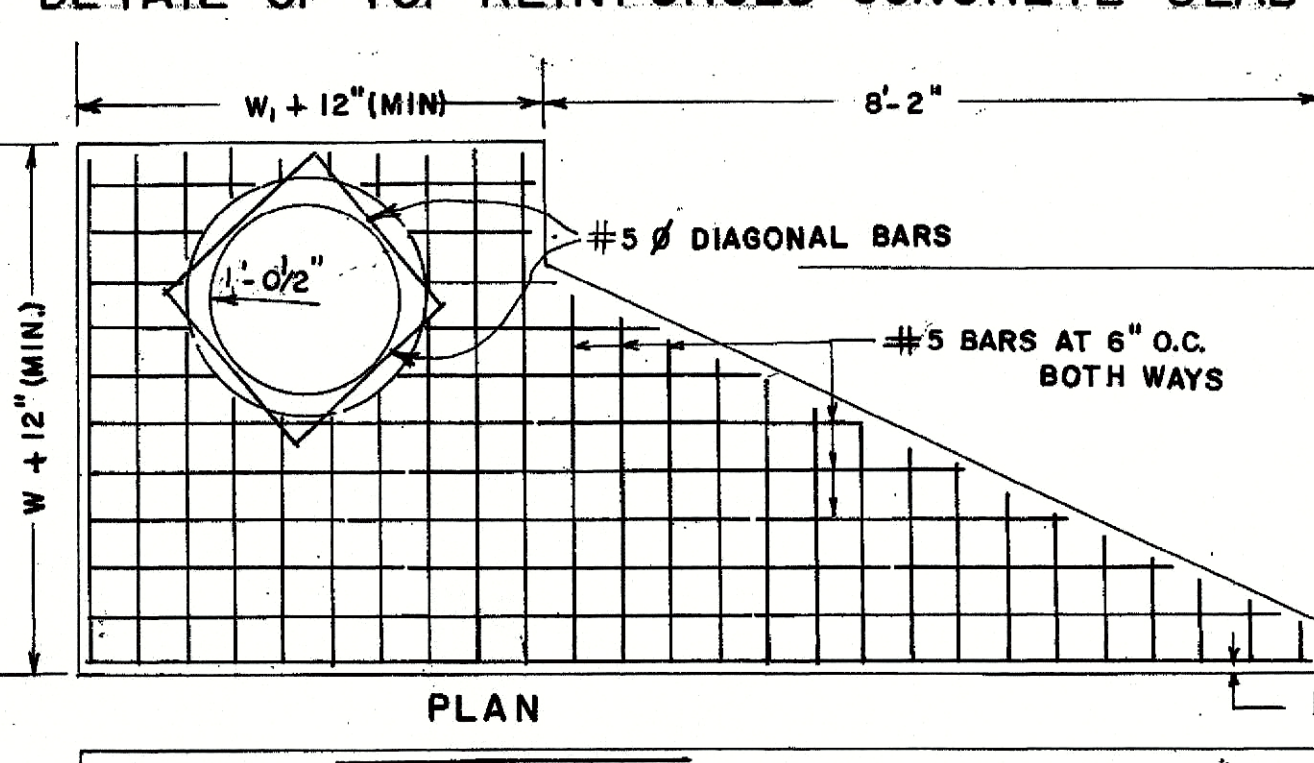
NON-REINFORCED SMALL BASIN (W NOT OVER 3'-7")

REINFORCED CONCRETE (HALF-SECTION)

CONSTRUCTION ALTERNATES

NOTE: DETAILS NOT SHOWN ABOVE FOR CONSTRUCTION ALTERNATES WILL BE SIMILAR TO BRICK CATCH BASIN DETAILS. SEE SEPARATE STANDARDS FOR PRECAST ALTERNATES.

DETAIL OF TOP REINFORCED CONCRETE SLAB



PLAN

ELEVATION

NOTE: PIPE SIZES, NUMBER, ALIGNMENT, AND INVERT SHOWN ARE ILLUSTRATIVE. SEE PLANS FOR SPECIFICS. INVERTS TO BE FORMED WITH GROUT OR CONCRETE AS DIRECTED BY THE ENGINEER OR AS SHOWN IN THE PLANS.

DEPARTMENT OF TRANSPORTATION STATE OF GEORGIA

STANDARD CATCH BASINS

FOR USE WITH CURB (6" HT. OR 8" HT.) & GUTTER

SCALE AS SHOWN

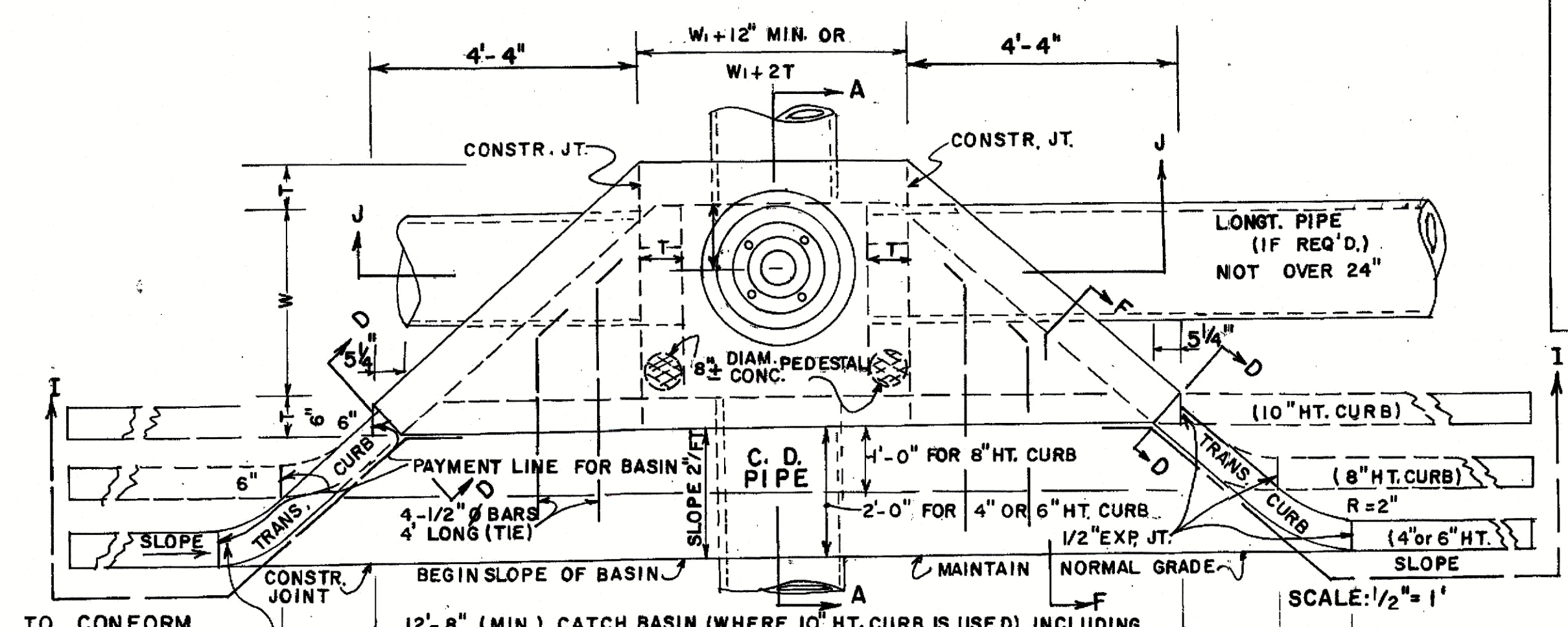
RED. & REDR. AUGUST, 1982

| | | |
|--------------|-----------------------------------|--------|
| REV. 8 | (SUBMITTED) | NUMBER |
| REDR. R.M.L. | STATE ROAD & AIRPORT DESIGN ENGR. | 1033D |
| TRA. G.M.E. | (APPROVED) | |
| CHK. R.K.C. | STATE HIGHWAY ENGINEER | |

| STATE | PROJECT NUMBER | SHEET NO. | TOTAL SHEETS |
|-------|----------------|-----------|--------------|
| GA. | | | |

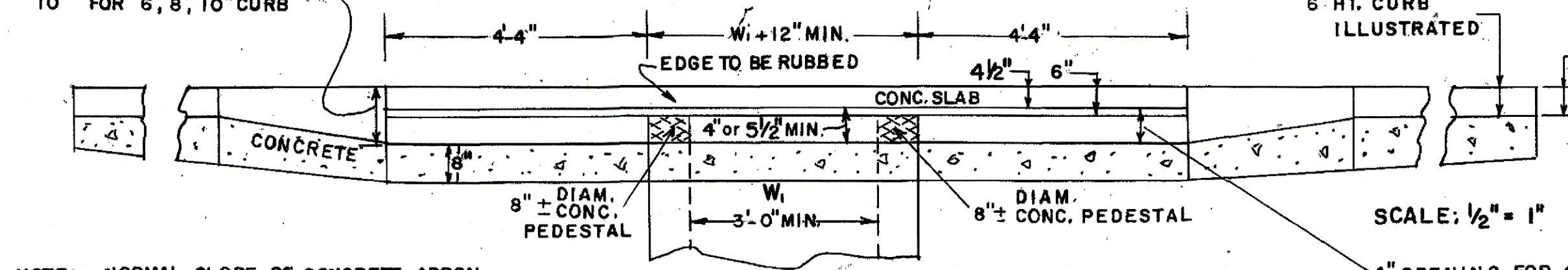
CATCH BASIN

(IF CATCH BASIN HAS LONGITUDINAL PIPE OVER 24" SEE DETAILS AT FAR RIGHT)

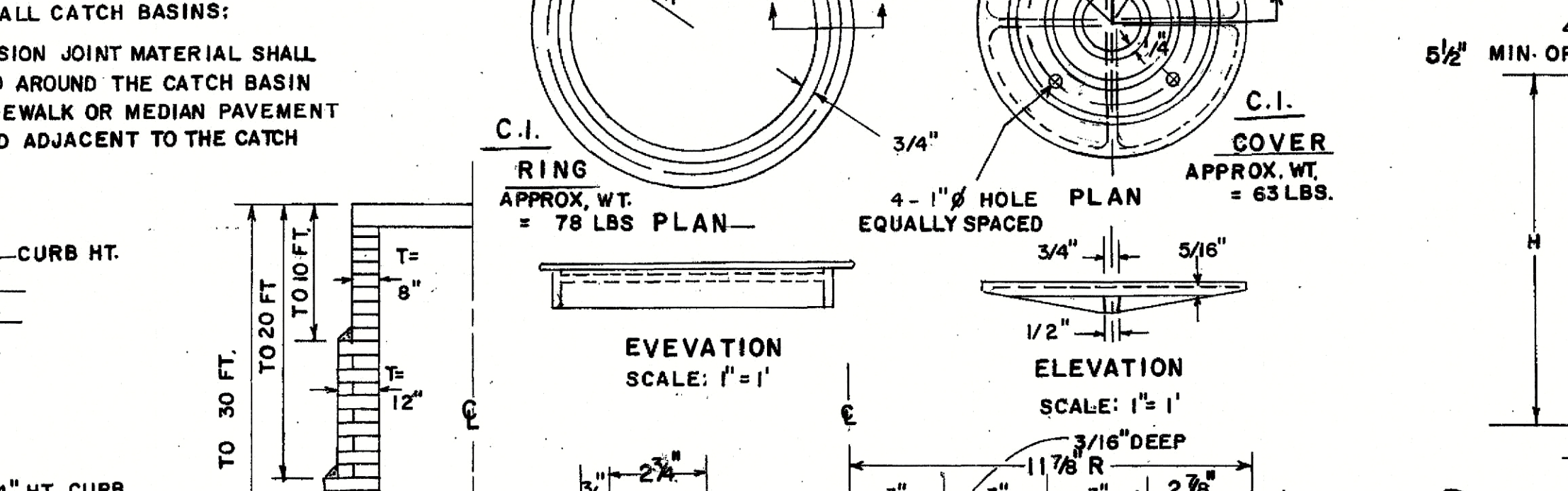
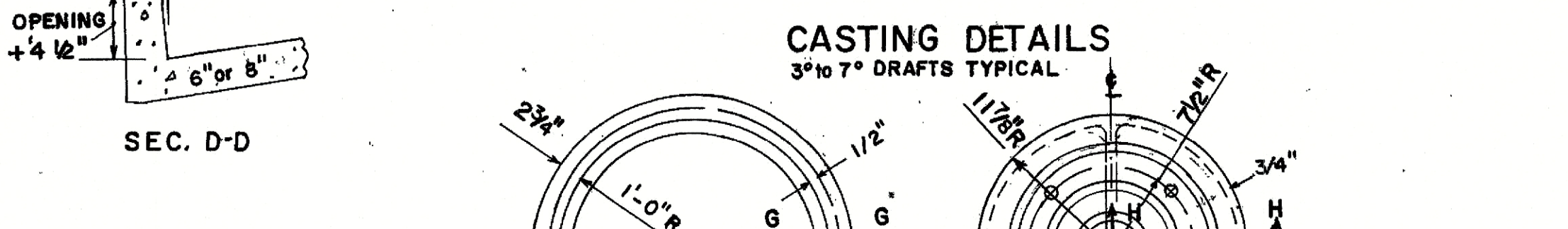
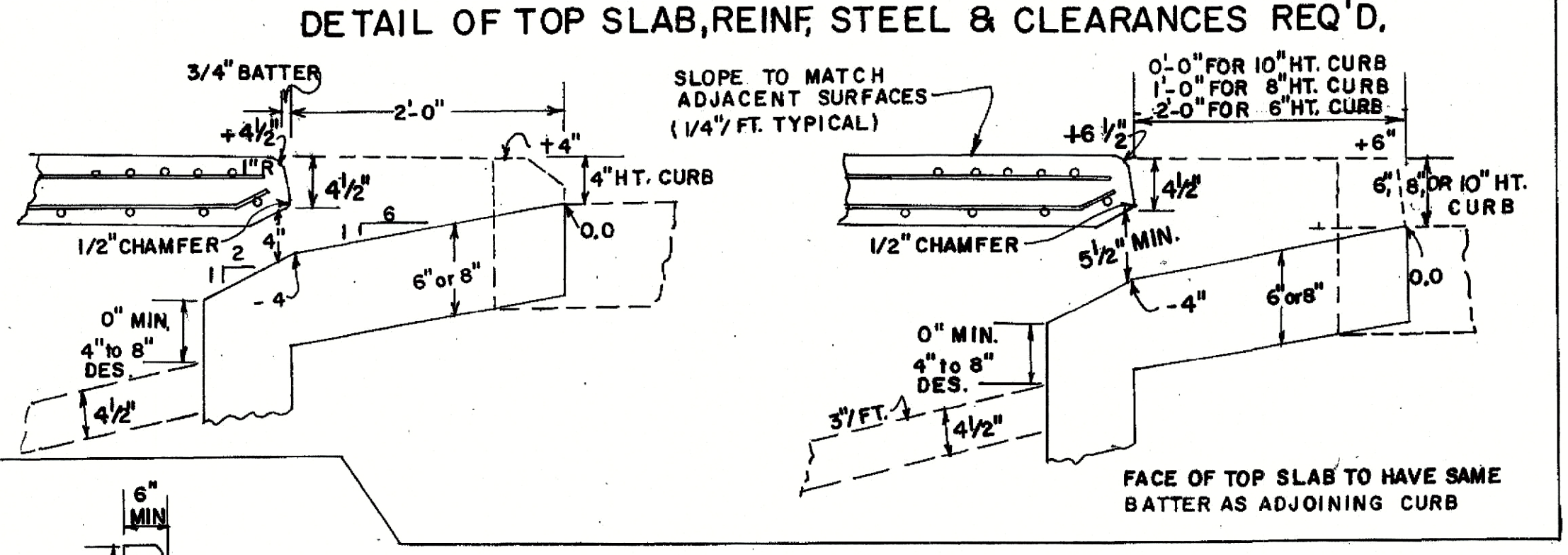


NOTE FOR ALL CATCH BASINS:
 1/2" EXPANSION JOINT MATERIAL SHALL BE PLACED AROUND THE CATCH BASIN WHERE SIDEWALK OR MEDIAN PAVEMENT IS PLACED ADJACENT TO THE CATCH BASIN.

SCALE: 1/2" = 1'

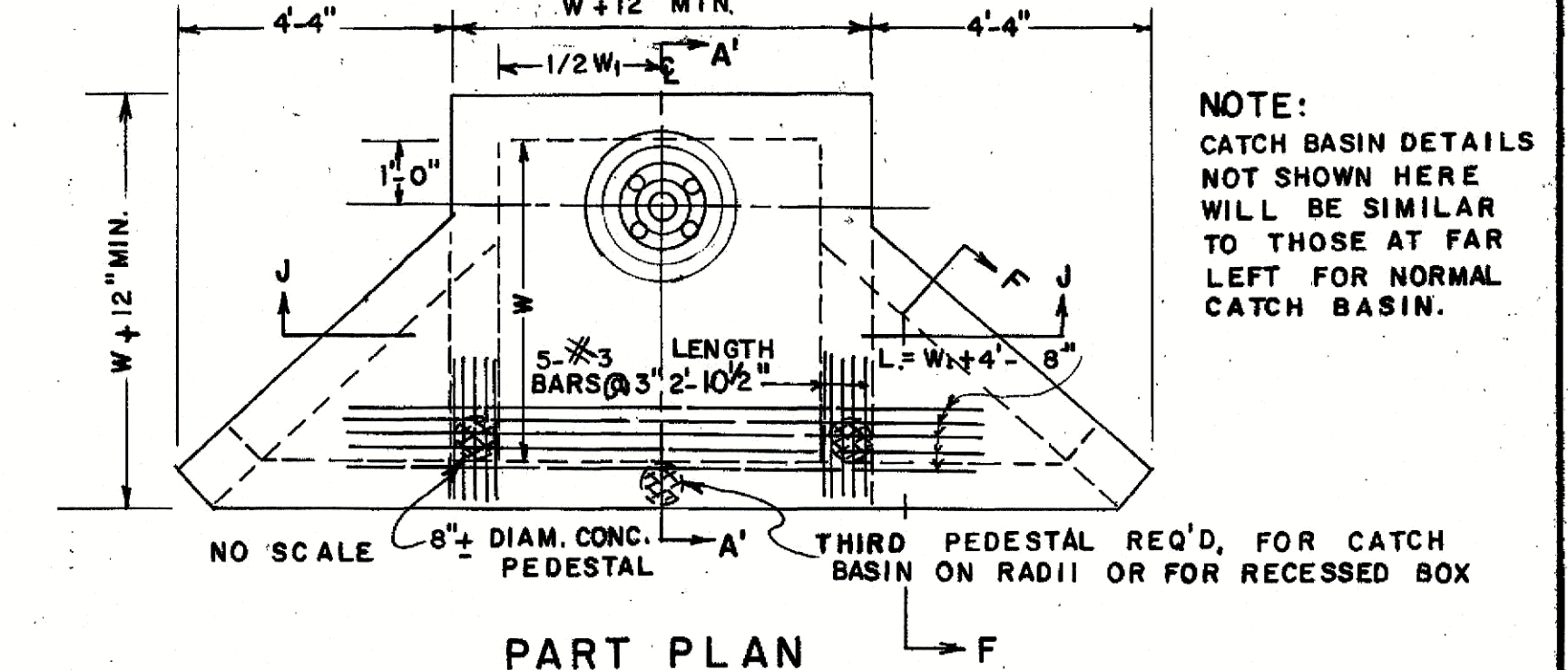


NOTE: NORMAL SLOPE OF CONCRETE APRON TO BE INCREASED UP TO 8" TOTAL, WHERE "H" PERMITS AND LONGITUDINAL PIPE IS LOWERED FOR OTHER REASONS.

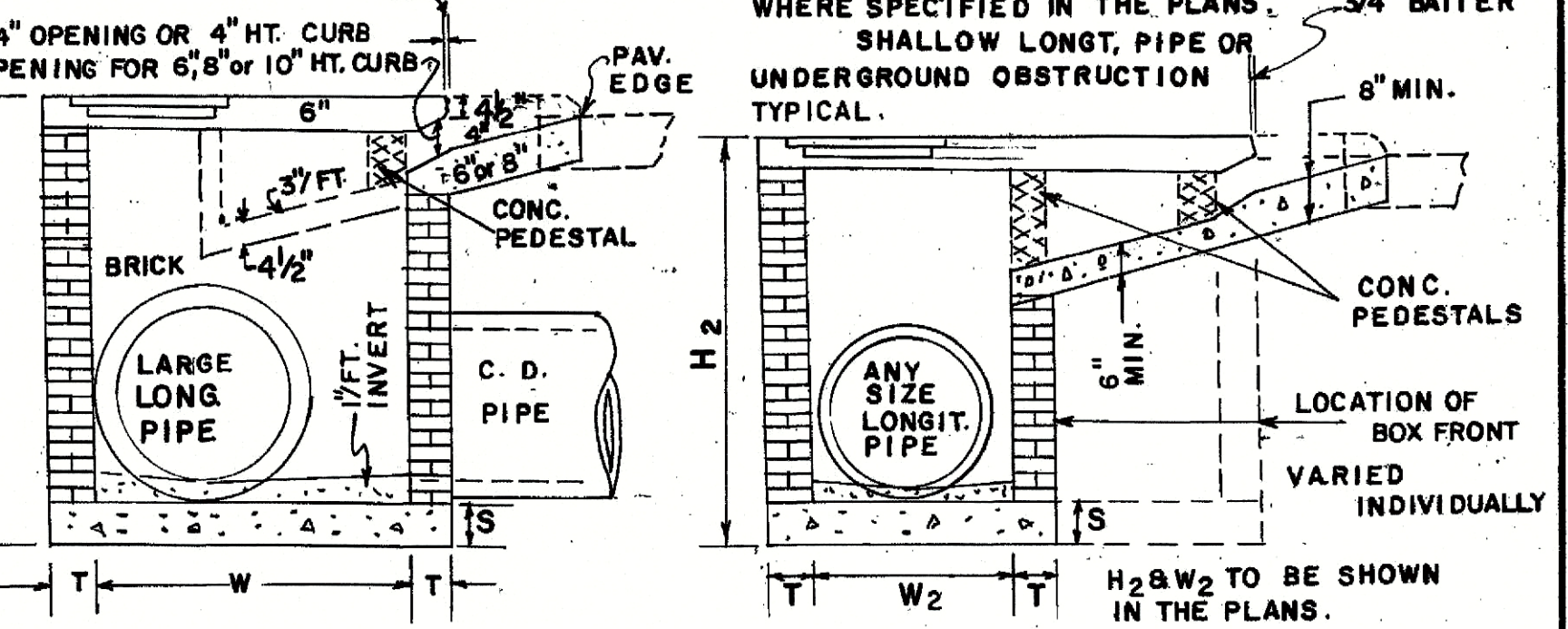


CATCH BASIN (WITH PROTRUDED BACK)

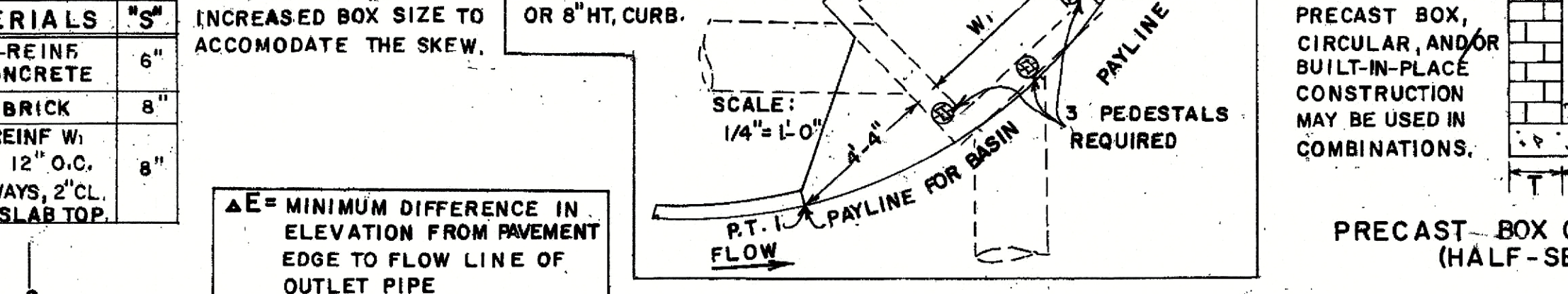
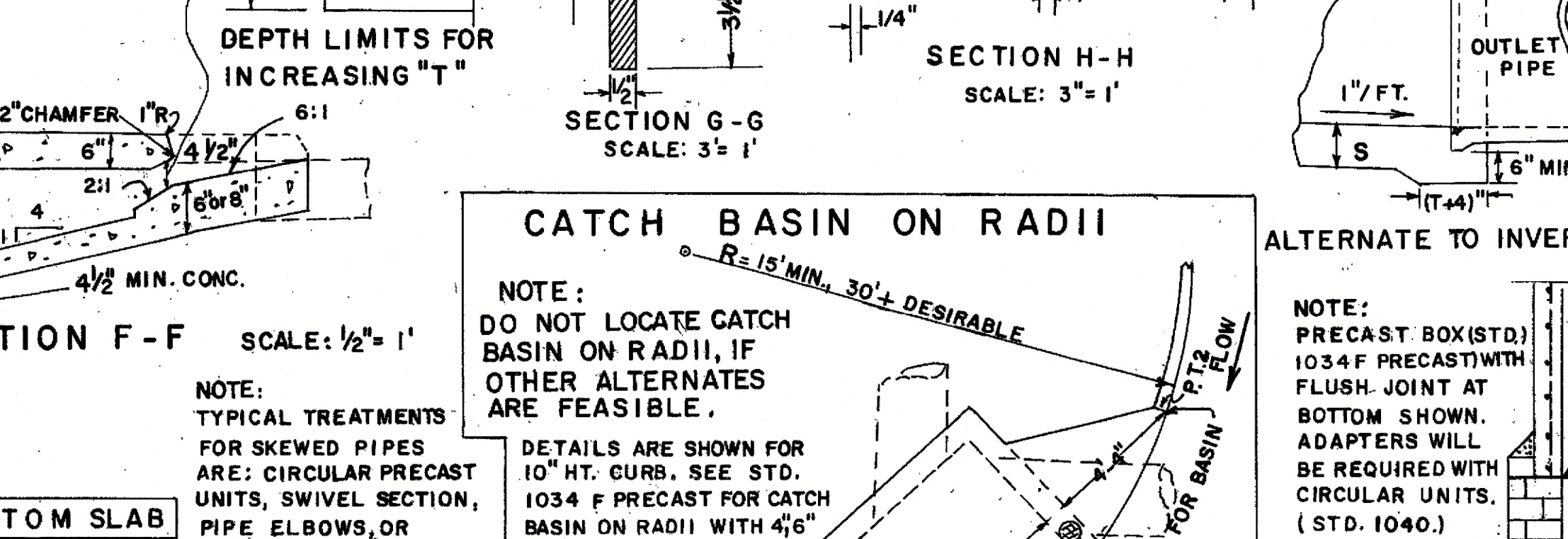
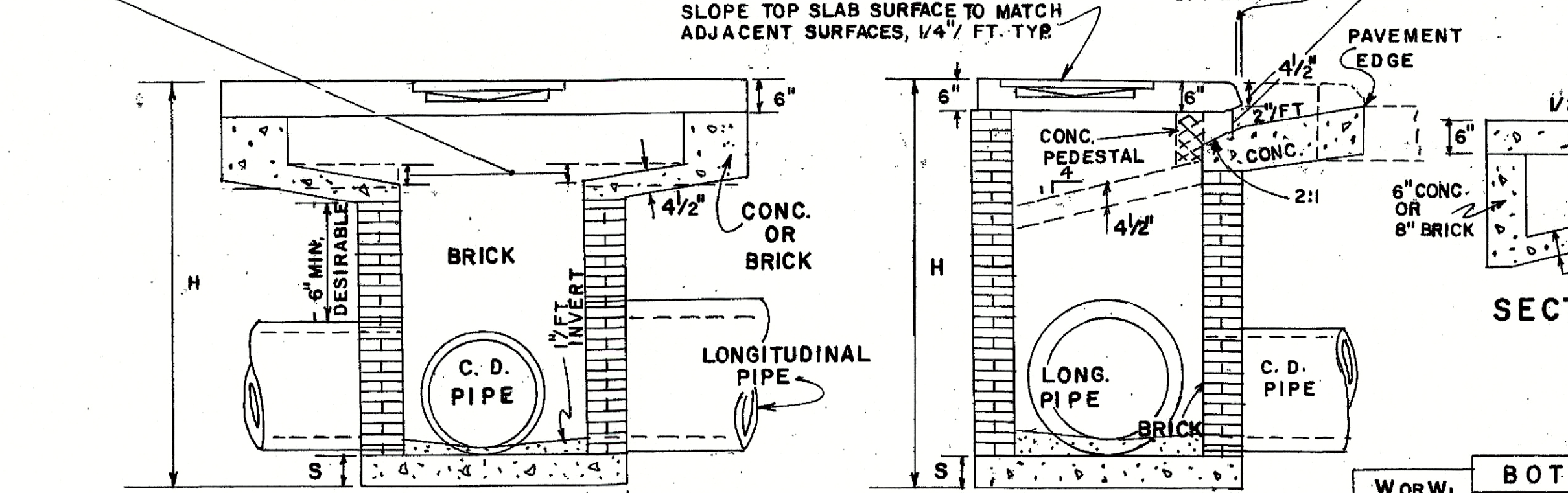
(FOR USE WITH LONGITUDINAL PIPE OVER 24" OR FOR USE WITH RECESSED BOX)



NOTE: CATCH BASIN DETAILS NOT SHOWN HERE WILL BE SIMILAR TO THOSE AT FAR LEFT FOR NORMAL CATCH BASIN.



NOTE: RECESSED BOX TO BE USED ONLY WHERE SPECIFIED IN THE PLANS. SHALLOW LONGT. PIPE OR UNDERGROUND OBSTRUCTION TYPICAL.

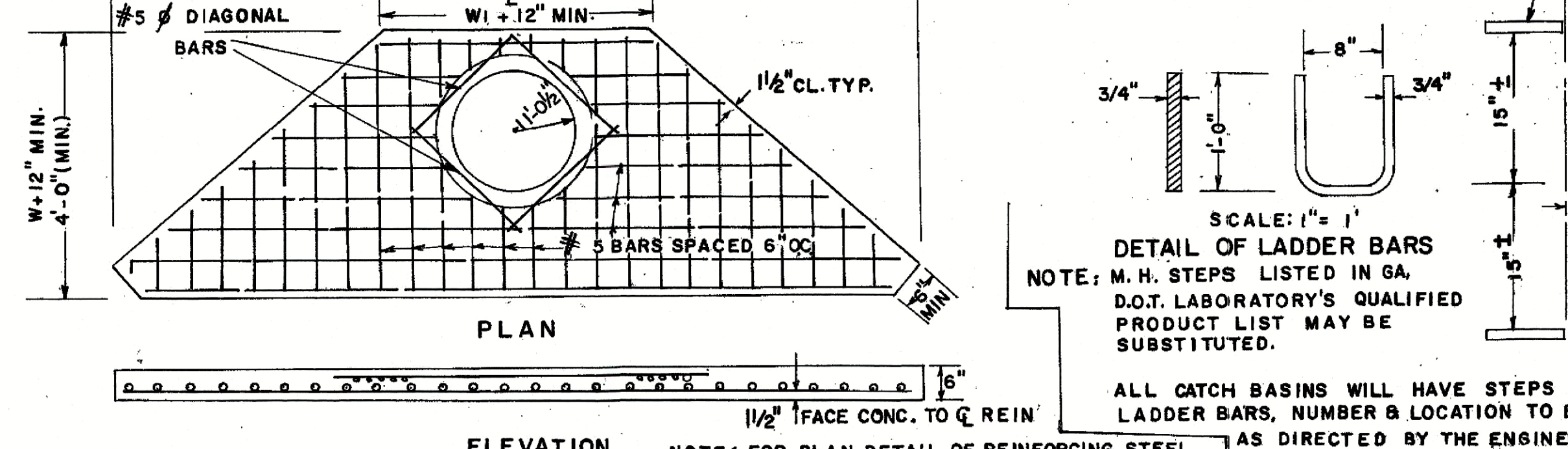


NOTE: DO NOT LOCATE CATCH BASIN ON RADI, IF OTHER ALTERNATES ARE FEASIBLE.

NOTE: TYPICAL TREATMENTS FOR SKEWED PIPES ARE: CIRCULAR PRECAST UNITS, SWIVEL SECTION, PIPE ELBOWS, OR INCREASED BOX SIZE TO ACCOMMODATE THE SKEW.

DETAILS ARE SHOWN FOR 10" HT. CURBS. SEE STD. 1034 F PRECAST FOR CATCH BASIN ON RADI WITH 4'6" OR 8" HT. CURB.

DETAIL OF TOP REINFORCED CONCRETE SLAB



NOTE: ALL BARS IN PLAN VIEW ARE SPACED AT 6" O.C.

NOTE: FOR PLAN DETAIL OF REINFORCING STEEL IN TOP PORTION OF SLAB, SEE PART PLAN.

NOTE: TOP SLAB MAY BE CAST IN PLACE OR PRECAST, IF SLAB IS CAST IN PLACE, BUILDERS PAPER IS TO BE PLACED BETWEEN THE CATCH BASIN & TOP SLAB.

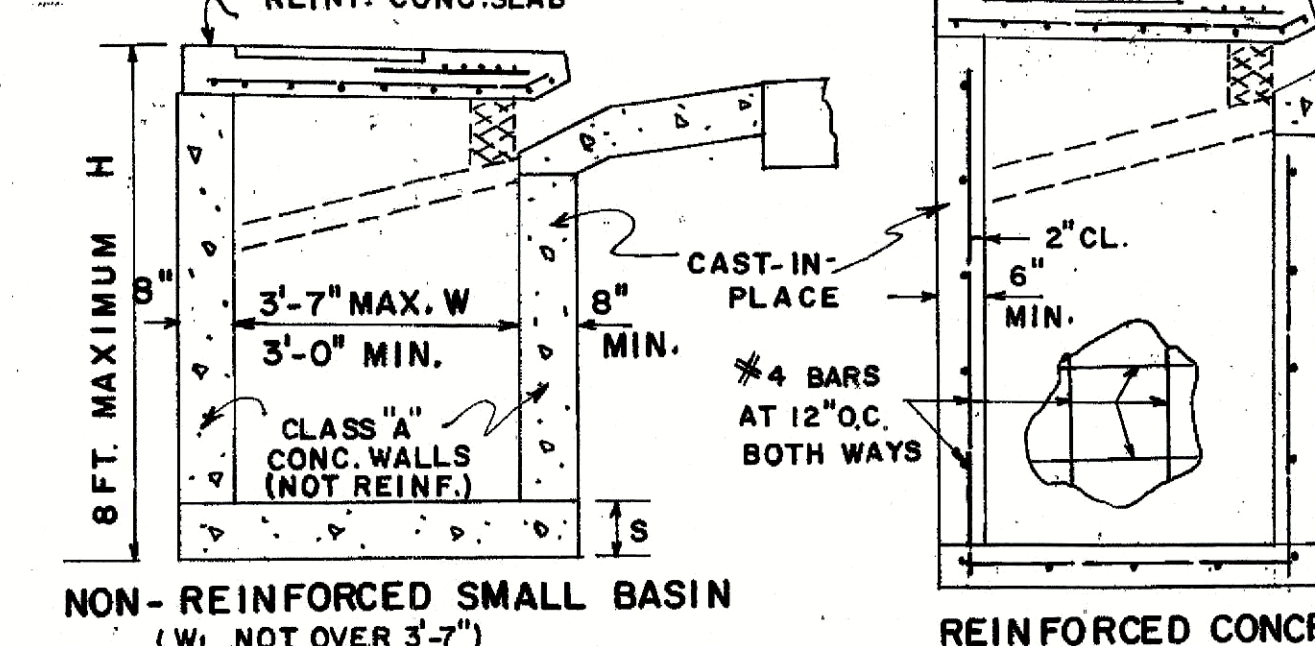
NOTE: PRECAST BOX (STD.) 1034 F PRECAST WITH FLUSH JOINT AT BOTTOM SHOWN. ADAPTERS WILL BE REQUIRED WITH CIRCULAR UNITS. (STD. 1040). PRECAST BOX, CIRCULAR, AND/OR BUILT-IN-PLACE CONSTRUCTION MAY BE USED IN COMBINATIONS.

NOTE: PIPE SIZES, NUMBER, ALIGNMENT AND INVERTS SHOWN ARE ILLUSTRATIVE. SEE PLANS FOR SPECIFICS. INVERTS TO BE FORMED WITH GROUT OR CONCRETE AS DIRECTED BY THE ENGINEER OR AS SHOWN IN THE PLANS.

NOTE: THE MIN. H, B & A E GIVEN IN ABOVE TABLE ARE BASED UPON TYPICAL OUTSIDE DIAMETERS OF CONC. PIPE AND MAY BE VARIED IF CONDITIONS PERMIT WITH THE VARIED DIMENSIONS SPECIFIED IN THE PLANS OR DIRECTED BY THE ENGINEER, W & W1 DIMENSIONS DO NOT HAVE TO BE EQUAL.

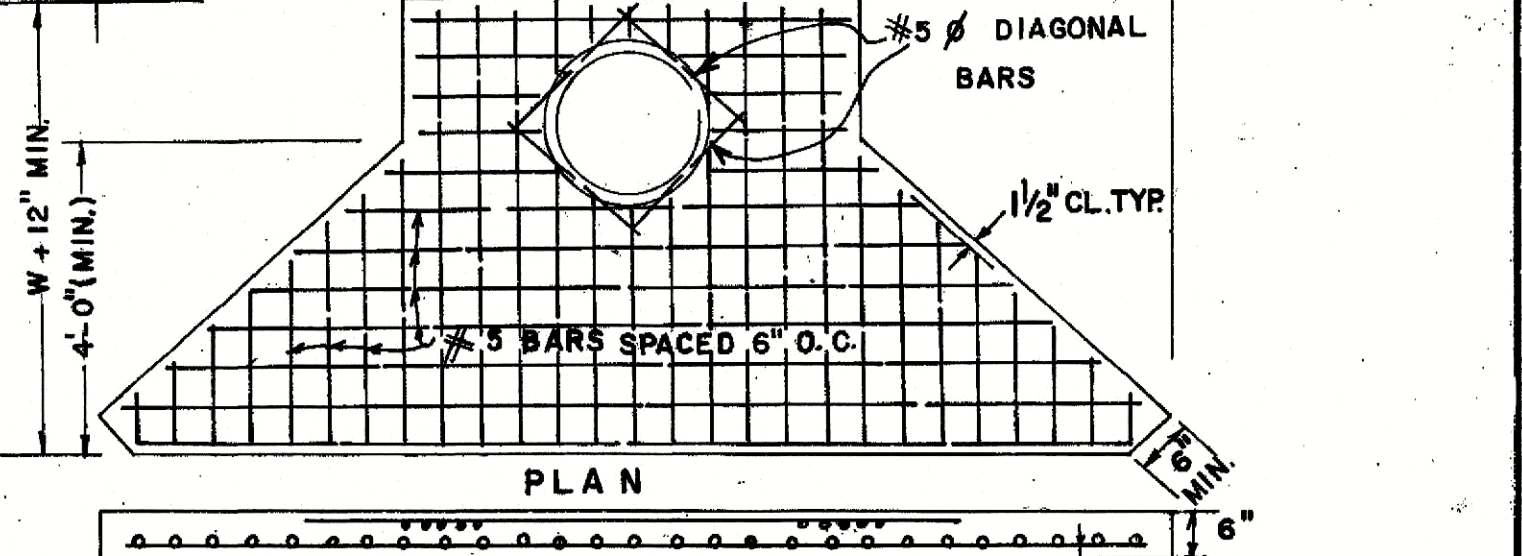
| PIPE DIA. | H (MIN.) | W OR W1 (MIN.) | (MIN.) E |
|-----------|----------|----------------|----------|
| 12 | 4'-4" | 3'-0" | 3'-1" |
| 15 | 4'-7" | 3'-0" | 3'-4" |
| 18 | 4'-10" | 3'-0" | 3'-7" |
| 24 | 5'-6" | 3'-0" | 4'-2" |
| 30 | 6'-2" | 3'-7" | 4'-10" |
| 36 | 6'-10" | 4'-6" | 5'-5" |
| 42 | 7'-4" | 5'-3" | 5'-9" |
| 48 | 8'-0" | 6'-0" | 6'-4" |
| 54 | 8'-6" | 6'-8" | 6'-10" |
| 60 | 9'-2" | 7'-4" | 7'-5" |

NOTE: PRECAST BOX ON BRICK (HALF-SECTION)



NOTE: DETAILS NOT SHOWN ABOVE FOR CONSTRUCTION ALTERNATES WILL BE SIMILAR TO BRICK CATCH BASIN DETAILS. SEE SEPARATE STANDARDS FOR PRECAST ALTERNATES.

DETAIL OF TOP REINFORCED CONCRETE SLAB



NOTE: PRECAST BOX (STD.) 1034 F PRECAST WITH FLUSH JOINT AT BOTTOM SHOWN. ADAPTERS WILL BE REQUIRED WITH CIRCULAR UNITS. (STD. 1040). PRECAST BOX, CIRCULAR, AND/OR BUILT-IN-PLACE CONSTRUCTION MAY BE USED IN COMBINATIONS.

NOTE: PIPE SIZES, NUMBER, ALIGNMENT AND INVERTS SHOWN ARE ILLUSTRATIVE. SEE PLANS FOR SPECIFICS. INVERTS TO BE FORMED WITH GROUT OR CONCRETE AS DIRECTED BY THE ENGINEER OR AS SHOWN IN THE PLANS.

DEPARTMENT OF TRANSPORTATION
STATE OF GEORGIA

STANDARD

CATCH BASINS

FOR USE WITH 4", 6", 8", OR 10" HT. HEADER OR INTEGRAL CURBS — IN SAGS OR LOW POINTS

SCALE AS SHOWN

REV. & REDR. AUGUST, 1982

REV. & R.M.U. (SUBMITTED) *Steve E. Hardy* NUMBER
 REDR. G.M.E. STATE ROAD & AIRPORT DESIGN ENGR. 1034 F
 TRA. G.M.E. (APPROVED) *Thomas D. ...*
 CHK. R.K.C. STATE HIGHWAY ENGINEER